



# COVID-19 SURVEY RESULTS

## Initial Impact On Comal County Nonprofits

### TOP TAKEAWAYS/KEY FINDINGS IMMEDIATE CONCERNS

- + A need to provide direct response programs and ongoing social service programs that will support the community in the long-term
- + A decline in funding sources that will impact their ability to serve clients
- + Decrease in supply of volunteers to help carry out the mission
- + An influx of new clients and the long-term effects of stress and uncertainty on well-being
- + A need for protective equipment that allow staff and volunteers to continue serving the community as safely as possible

### MAJOR OPERATIONAL CONCERNS

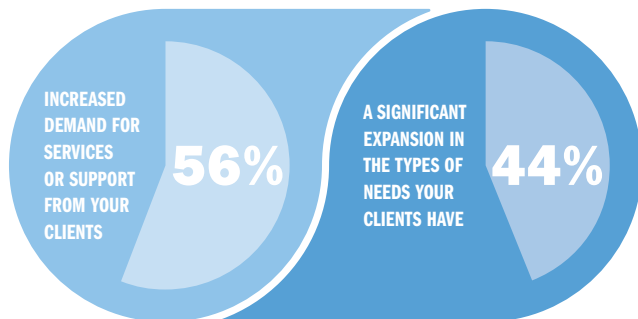
Survey participants were asked provide the top 5 operational ramifications they have experienced as a result of the COVID-19 pandemic:

- 1 Disruption of services to your clients or communities
- 2 Cancellation of advocacy or fundraising events
- 3 Increased demand for services or support from your clients and communities
- 4 Challenges related to staff and volunteers needing to work remotely
- 5 Disruption of supplies or services from your partners

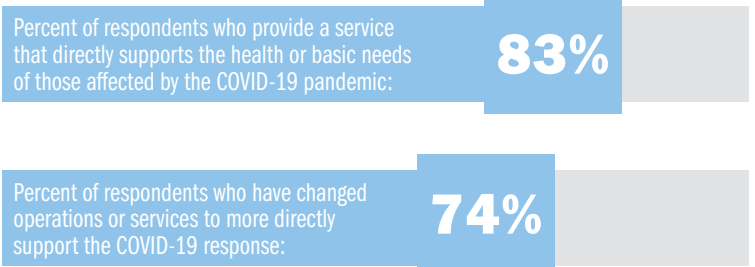
### IMPACT ON STAFFING



### INCREASED DEMAND AND EVOLVING NEEDS



### RESPONDING TO COVID-19

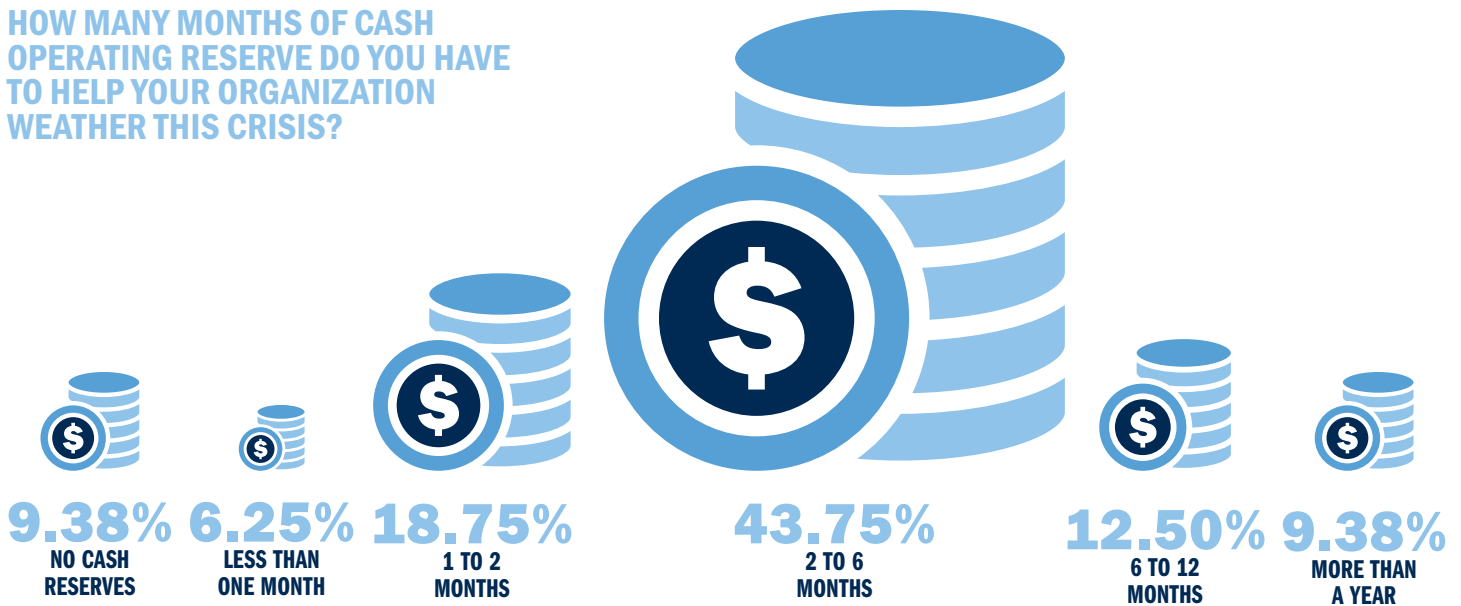


### IMPACT ON FINANCIAL RESOURCES

#### ESTIMATED LOSSES DUE TO COVID-19 (MID-MARCH THROUGH MAY 2020)

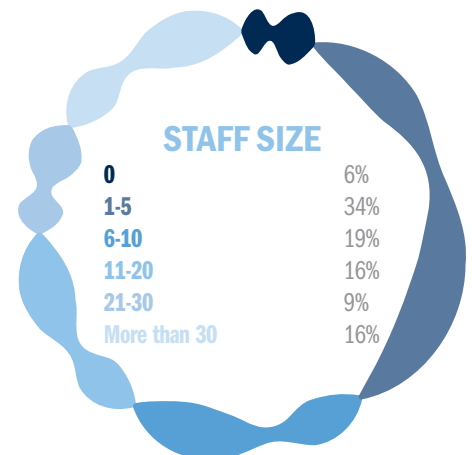
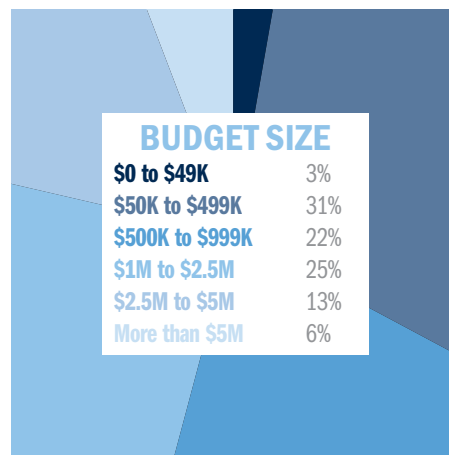
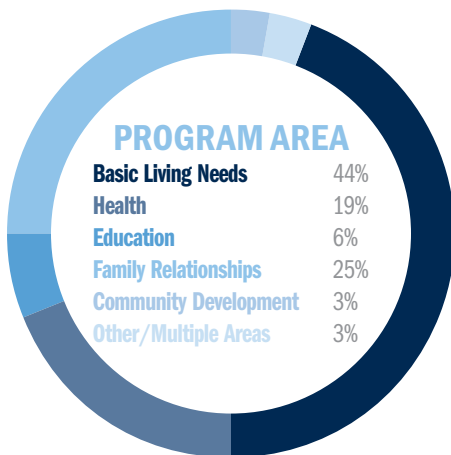
Reduction in contracted reimbursements	\$224,125
Thrift stores or sale of goods	\$330,872
Reduced grant funding	\$434,500
Reduced individual or business donations	\$1,134,515
Reduced earned revenue / fee for service	\$462,662
Cancellation of fundraising events	\$1,067,524

# HOW MANY MONTHS OF CASH OPERATING RESERVE DO YOU HAVE TO HELP YOUR ORGANIZATION WEATHER THIS CRISIS?



## SURVEY PARTICIPANTS

32 NONPROFITS IN NEW BRAUNFELS AND COMAL COUNTY PARTICIPATED IN THE SURVEY:



# COVID-19 SURVEY RESULTS

## Initial Impact On Comal County Nonprofits